

perchéno

EILEEN COLLECTION S/S2023



PERCHÈno

GIOIELLI COMPONIBILI
E REVERSIBILI

COMBINABLE AND
REVERSIBLE JEWELS

“Il gioiello contemporaneo
è un luogo in cui si manifestano
in tutta libertà
le espressioni individuali:
quelle del creatore
e quelle di chi lo indossa.”



EILEEN COLLECTION

PERCHÈno

è

per chi non si riconosce
in una stessa forma
o in un unico colore.
Per chi si concede asimmetrie.
Per chi ama le sorprese
e sorride di fronte all'insolito.
Per chi cerca originalità
senza stravaganze,
unicità insieme ad eleganza
ed equilibrio.

is

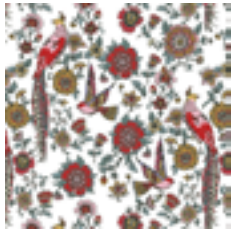
meant for those who don't see
themselves in a particular shape
or a single tone.
Therefore who don't tarry on
symmetries.
For those who love surprises
and smile before the unusual.
For those who seek the original
without beingbizarre,
but remaining unique, elegant
and balanced.

INDICE | INDEX

6	CARTELLA COLORE Color Charts
7	ORECCHINI Earrings
36	BRACCIALE Bangle
39	COLLANE SPILLA E CIONDOLI Necklace-Brooch And Pendants
54	ANELLI Rings

CARTELLA COLORE COLOR CHARTS

ABBINAMENTO A

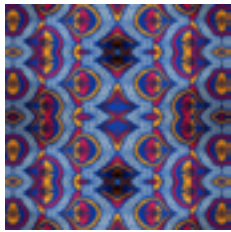


01

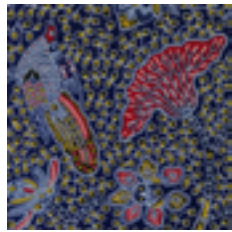


02

ABBINAMENTO B



03

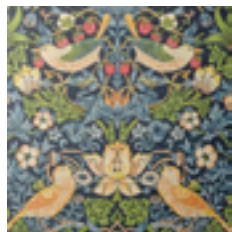


04

ABBINAMENTO C

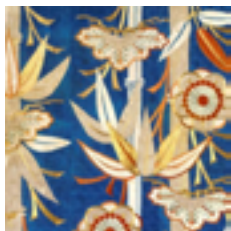


05



06

ABBINAMENTO D



07



08

ABBINAMENTO E

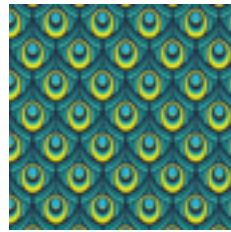


09

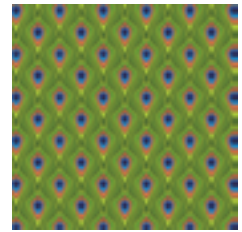


10

ABBINAMENTO F

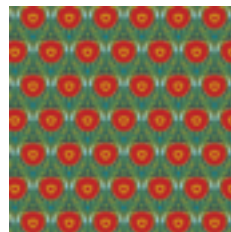


11



12

ABBINAMENTO G

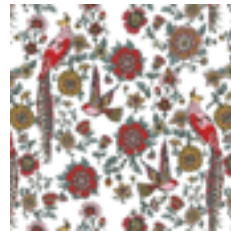


13



14

ABBINAMENTO H



15



16

ORECCHINI
COMPONIBILI E REVERSIBILI

Combinable And Reversible Earrings





EILEEN | ART. CODE 01_23



EILEEN | ART. CODE 01_23

Ottone | Decorazione Applicata
Brass | Applied Pattern







EILEEN ART. CODE 02-23

Ottone | Decorazione Applicata
Brass | Applied Pattern



EILEEN | ART. CODE 02_23





EILEEN | ART. CODE 03_23

Ottone | Decorazione Applicata
Brass | Applied Pattern





EILEEN | ART. CODE 04-23



EILEEN | ART. CODE 05-23



EILEEN | ART. CODE 05_23

Ottone | Decorazione Applicata
Brass | Applied Pattern



EILEEN | ART. CODE 05_23





EILEEN| ART. CODE 06_23

Ottone | Decorazione Applicata
Brass | Applied Pattern



EILEEN | ART. CODE 06_23



EILEEN | ART. CODE 06_23

Ottone | Decorazione Applicata
Brass | Applied Pattern





EILEEN | ART. CODE 07_23

Ottone | Decorazione Applicata
Brass | Applied Pattern



EILEEN | ART. CODE 07_23



EILEEN | ART. CODE 08-23



EILEEN | ART. CODE 08_23

Ottone | Decorazione Applicata
Brass | Applied Pattern



EILEEN | ART. CODE 08_23



EILEEN | ART. CODE 09-23



EILEEN | ART. CODE 09_23

Ottone | Decorazione Applicata
Brass | Applied Pattern







EILEEN | ART. CODE 09_23

Ottone | Decorazione Applicata
Brass | Applied Pattern

BRACCIALE

bangle





EILEEN | ART. CODE 10_23

Ottone | Decorazione Applicata
Brass | Applied Pattern

COLLANE SPILLA

necklace-brooch





EILEEN | ART. CODE 11-23



EILEEN | ART. CODE 11_23

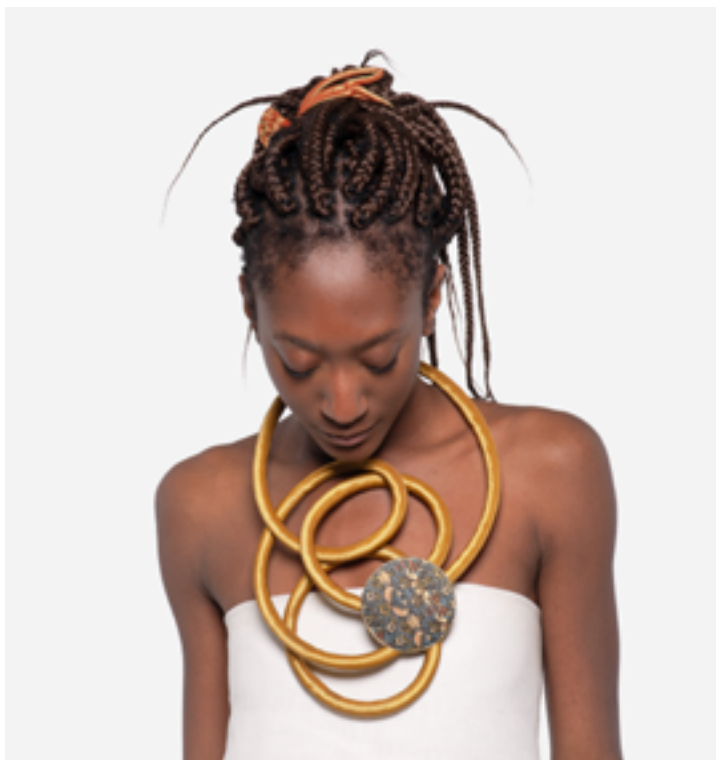


EILEEN | ART. CODE 12_23



EILEEN | ART. CODE 12_23

Ottone | Decorazione Applicata
Brass | Applied Pattern





EILEEN | ART. CODE 13_23

Ottone | Decorazione Applicata
Brass | Applied Pattern





EILEEN | ART. CODE 14_23

Ottone | Decorazione Applicata
Brass | Applied Pattern



EILEEN | ART. CODE 15-23



EILEEN | ART. CODE 15_23

Ottone | Decorazione Applicata
Brass | Applied Pattern



EILEEN | ART. CODE 18-23





EILEEN | ART. CODE 18_23



A N E L L I

rings





EILEEN | ART. CODE 16_23

Ottone | Decorazione Applicata
Brass | Applied Pattern





PERCHÈno

Silvia Tagliasacchi

+39 3931212468

xchenogioielli@gmail.com

www.perchenogioielli.com



[xchenogioielli](https://www.facebook.com/xchenogioielli)



[perche_no_gioielli](https://www.instagram.com/perche_no_gioielli)